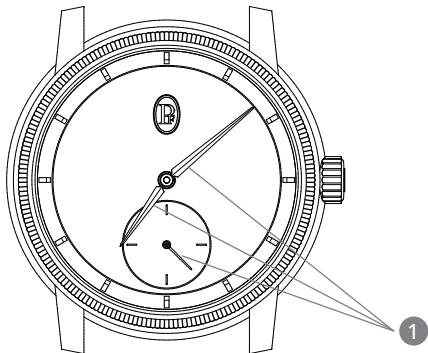


*Toric Petite Seconde*

PF780

PARMIGIANI

FLEURIER



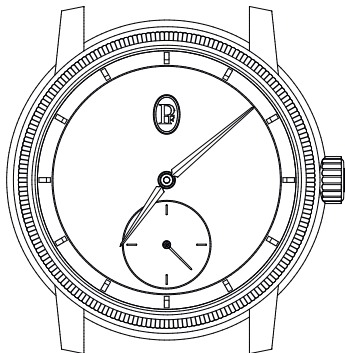
# *Toric Petite Seconde*

PF780

---

## INDICATORS

1. Hours, minutes, seconds counter



counterclockwise  clockwise

## *Toric Petite Seconde*

PF780

---

### WINDING

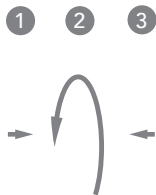
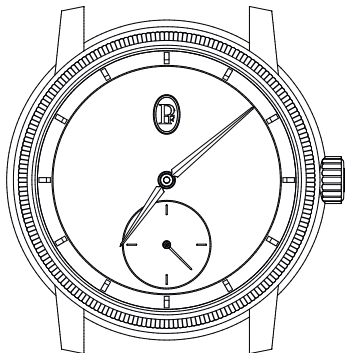
Your watch is equipped with a hand-wound mechanical movement.

It takes 110 rotations of the crown to wind your watch fully, giving you a power reserve of 60 hours.

We advise winding it fully (110 rotations) when it has stopped, then every day thereafter (44 rotations), at a set time, preferably in the morning. To do this:

1. Turn the crown clockwise.

The watch can be wound using the crown at any time.



counterclockwise ↺ ↻ clockwise

## *Toric Petite Seconde*

PF780

---

### SETTING THE TIME

1. Pull the crown out one notch.
2. Turn the crown anti-clockwise to the desired time.
3. Push the crown back into its initial position.

PARMIGIANI.COM

